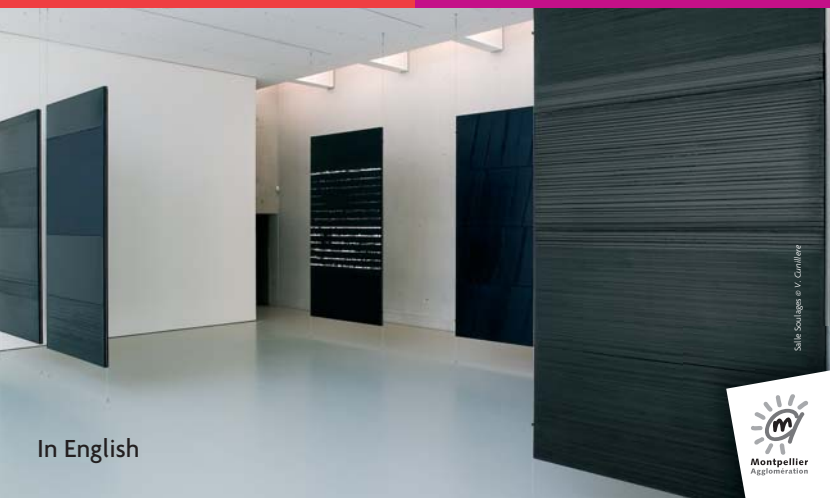




Stem Comme les jours derniers peints les jours

musée fabre
montpellier agglomération



Salle Soulages © V. Comilère



In English

The soul of a place rediscovered

Radically restructured, the Musée Fabre is placing 9 200 m² at the service of a contemporary perception of what a museum can be. In other words, a place for discovery, for research, for exchanges, for developing knowledge but, above all, a place where emotions can surface in the presence of an exceptionally diverse artistic heritage.

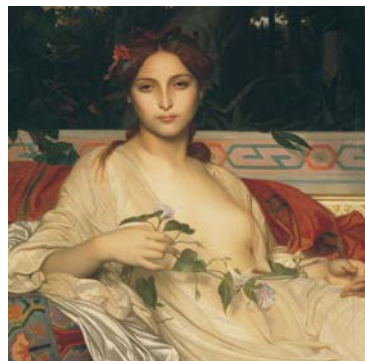
Welcome to the new musée Fabre, one of the most beautiful in all of Europe.

Georges Frêche
President of Greater Montpellier
President of the Languedoc-Roussillon Region



Salle des Collections © V. Comilère

An exemplary museum



Cabanel 'Alcyonide'

Since its creation in 1828, the Musée Fabre has been continuously enriched through gifts or inheritances from knowledgeable collectors: Fabre, Valedau, Bruyas, Bonnet-Mel, Canonge, Cabanel, Bazille and even, more recently, Pierre Soulages. For a museum, this unusual method constitutes the very heart of an identity that makes it so special within the French museum context. Its collections are set out in the form of major series emphasising certain periods in the history of art, far removed from any encyclopaedic approach. Although these collections highlight the lives, the meetings and the artistic 'love-at-first-sight' reactions of these famous donors, what the Musée Fabre actually achieves is an overview of the history of the creation of Europe, from the Renaissance up to the present day.

Emotions European spirit

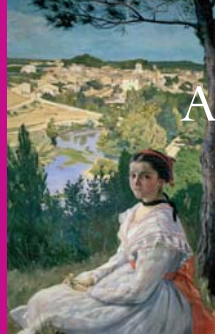
Revisited works of art

More than 900 works, paintings and sculptures have been restored or refurbished. Spectacular interventions have mobilised teams of restorers as in the case of works by Coppola, Vien, Restout or Coypel. At the same time, many antique frames were restored on a unique scale.

If we consider the acquisitions and loans approved by national museums, we can say that the renovated Fabre museum will enable even for its most loyal cognoscenti to embark on a fundamental rediscovery of its collections.



© R.C.L.S. Studio



Bazille 'Vue du village'

A fresh look at the collections

Remaining in perfect harmony with the spirit of the collections, the museum's layout has sought to strengthen the

coherence of the major series that constitute its appeal and charm: Scandinavian collections with Rubens, Dou and Teniers, the age of Louis XIV, illustrated by Bourdon, Blanchard or Coypel, Neoclassicism taking us back to Vien, Houdon, Suvée, David and, quite obviously, to Fabre, Romanticism courtesy of Delacroix and Géricault, Realism with Courbet, Academism with Ingres and Cabanel, the early stirrings of Impressionism through Bazille, the use of colour with Van Dongen, Chabaud, and Delaunay, not forgetting the sculptures of Germaine Richier. At the end of this journey of discovery, the new wing displays the exceptional gift and loan by Pierre Soulages (including 12 large exhibits), together with works from major figures in the field of French contemporary art such as Hantaï, Viallat, Bioulès and Dezeuze, members of the Supports/Surfaces school.

Thanks to two graphic arts agencies that mark the visit to this museum, the collection, one of the most important in France, is unveiled to the rhythm of the seasons through themed exhibitions. From the Italian Renaissance to the 20th century, the collection displays over aspects of the art of Raphael, Poussin, Boucher, Fragonard, Greuze, David, Delacroix, Matisse, Alechinsky...

Contemplation



Delacroix, Escrimeurs militaires des Mousquetaires

musée fabre
montpellier agglomération



Silva dos Santos, M. Crémieux



@Montpellier Agglomération

An interactive visitor

The project that led to the museum's renovation prioritised a powerful concept: guiding the visitor through his journey of discovery and providing him with the tools he needs in order to follow up the reaction aroused by a work, an artist or an artistic movement.

Discovering the collections can be enriched by **guided tours**. These tours can be extended by **practical art workshops** devoted to the plastic or data-based arts. Open to all comers,

these workshops have been designed to train the eye and to stimulate creative talent while providing an understanding of materials, allowing participants to practice techniques or to experiment with different styles.

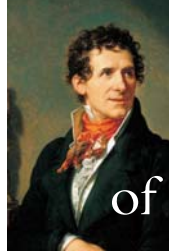
Various areas of the museum combine concepts of relaxation, discovery and conviviality: the **documentation centre**, the **auditorium**, the **book-gift shop** and the **restaurant**.

As soon as the visitor steps over the threshold, he is faced with a **multimedia gallery** where 8 freely accessible computers provide him with comprehensive information on all aspects of the museum. The system also allows him to produce his own « customised » itinerary to suit his mood at the time. Similarly, the route is scattered with **audio-visual presentation rooms** that help the visitor round off his visit by providing information on the collections, the works and on the artists.



@Montpellier Agglomération

multimedia visits workshops



An ambitious programme of exhibitions

With the intention of developing projects in cooperation with the most prestigious museums worldwide, the Musée Fabre devised a 1 000 m² temporary exhibition area.

From the 4th February to the 6th May 2007, this venue opens a new window onto post-war painting and on the emergence of a new abstract art as part of a dialogue with North American art, through a tribute to the gallery owner, Jean Fournier, called « *La couleur toujours recommandée* » [A fresh approach to colour].

A second exhibition, running from the 9th June to the 9th September 2007, highlights the role played by American collectors in disseminating impressionism. It brings together works of Monet, Pissarro, Renoir, Degas and even Caillebotte, works that are rarely seen in Europe and that are grouped together under the title « *L'impressionnisme vu d'Amérique* » [Impressionism as seen by America]. Finally, from the 6th October 2007 to the 20th January 2008, a retrospective exhibition of the works of François-Xavier Fabre will enable visitors to rediscover this artist's career, a career which, paradoxically, was eclipsed by that of Fabre the collector and founder of the museum.

In 2008, exhibitions covering video art, Courbet, Raoux, Van Gogh and Gauguin will link the Musée Fabre with the Orsay Museum, the Centre Georges-Pompidou and the Metropolitan Museum of Art of New-York, among others.

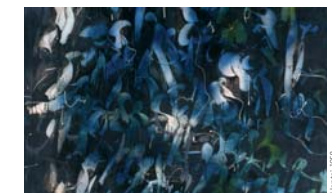
Events

A repeated pleasure

With more than 800 paintings and sculptures on view, it is unlikely that one single exhaustive visit will be enough to view all the collections. In order to encourage repeat visits, the Musée Fabre and Greater Montpellier have decided on admission fees that will be accessible to the widest public in addition to yearly subscriptions. Also, with the view of providing visitors with greater flexibility, the admission ticket will remain valid for the whole day.

Opening hours: Tuesdays, Thursdays, Fridays and Sundays from 10am to 6pm, Wednesdays from 1pm to 9pm, Saturdays from 11am to 6pm. Closed every Monday. Full disabled access available.

Musée Fabre
39, boulevard Bonne-Nouvelle
34000 Montpellier - 04 67 14 83 00
musee.fabre@montpellier-agglo.com
www.montpellier-agglo.com



Pierre-Georges de La Tour

Museum day tickets